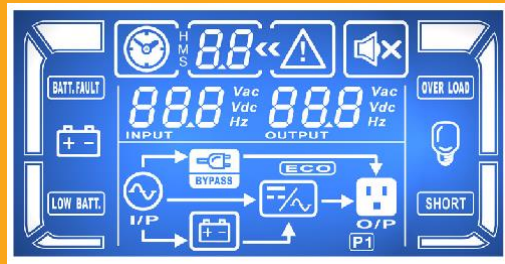


Titan Pro



LCD Display Panel



• True double-conversion online UPS

A true double conversion UPS will provide clean, high level quality power to fully protect mission-critical devices such as sensitive networks, small computer centers, servers, telecom applications, as well as for industrial applications.

• Output power factor 0.9

Compared to the online UPS in the current market, Titan Pro series provides better output power factor up to 0.9. It offers higher performance and efficiency for critical applications.

• Wide input voltage range (110V -300V)

Titan Pro can still provide stable power to connected devices under unstable power environments.

• Programmable power management outlets

With programmable power management outlets, users can easily and independently control load segments. During power failure, this feature enables users to extend battery time to mission-critical devices by shutting down the non-critical devices.

Programmable Outlets (P1)
- connect to non-critical devices



• 50/60 Hz Frequency Converter Mode

Lock output frequency at 50Hz or 60Hz to suit power sensitive equipments.

• ECO mode operation for energy saving

Offer efficiency as high as 97% to cut energy usage & cost. UPS power application via static bypass, timely returning to online double conversion when the need arises.

• Emergency Power Off (EPO) Function

This feature can secure the personnel and equipment in case of fire or other emergencies.

• SNMP+USB+RS-232 multiple communications for 1-3K models

This feature allows either USB or RS-232 communication port to work with SNMP interfaces simultaneously.

• DSP technology applied for 6K and up models

A DSP controller provides an improved and cost-effective solution with high performance.

• Smart battery charger design to optimize battery performance

- Titan Pro 1-3K series is equipped with 2-stage charger design to guarantee battery discharge time. Besides, it will adjust charging voltage according to outside temperature. This feature will extend the useful service life of batteries.
- Titan Pro 6K and up models are equipped with 3-stage extendable charger for optimized battery performance. This feature extends the useful service life of batteries and optimizes battery recharge time. Besides, the extendable charger design can be stacked in numbers for large-capacity battery charging.

• Maintenance bypass available for 6K and up models

Internal bypass assures continuous power to critical devices during UPS maintenance.

• Optional hot standby mode and N+X parallel redundancy available for 6K and up models

For genuinely redundant power protection, Titan Pro (6K and up models) can either be used in parallel operation with up to 3 units or hot standby mode. Slave UPS will back up the load in the event of critical component failure. It increases power safety and availability.

• Adjustable battery numbers for 6K and up models

Titan Pro (6K and up models) can still normal operate well with only 18 or 19 internal batteries.

• Built-in isolation transformer (Option)

With built-in isolation transformer, the UPS will offer full isolation and complete common mode noise rejection for connected precious equipment. It becomes an ideal power source with 100% protection against unexpected AC power problems.



1KVA/1.5KVA/2KVA/3KVA/6KVA/10KVA Online UPS Selection Guide

MODEL	Titan Pro 1K (L)	Titan Pro 1.5K (L)	Titan Pro 2K (L)	Titan Pro 3K (L)	Titan Pro 6K (L)	Titan Pro 10K (L)	
PHASE	Single phase with ground						
CAPACITY	1000 VA/900W	1500 VA/1350W	2000 VA/1800W	3000 VA/2700W	6000 VA/5400W	10000 VA/9000W	
INPUT							
Nominal Voltage	200/208/220/230/240 VAC or 100/110/115/120/127 VAC				208/220/230/240 VAC		
Voltage Range	55-150 VAC ± 5 % or 110-300 VAC ± 5 % at 50% load 80-150 VAC ± 5 % or 160-300 VAC ± 5 % at 100% load				110-300 VAC at 50% load 176-300 VAC at 100% load		
Frequency Range	40 Hz – 70Hz				46 – 54 Hz or 56 – 64Hz		
Power Factor	≥ 0.99 @ Nominal Voltage (100% Load)				≥ 0.99 @ 100% Load		
OUTPUT							
Output Voltage	200/208/220/230/240 VAC or 100/110/115/120/127 VAC				208/220/230/240 VAC		
AC Voltage Regulation (Batt. Mode)	± 1%				± 1%		
Frequency/Range (Synchronized Range)	47–53 Hz or 57–63Hz				46 – 54 Hz or 56 – 64Hz		
Frequency Range (Batt. Mode)	50 Hz ± 0.25 Hz or 60Hz ± 0.3 Hz				50 Hz ± 0.1 Hz or 60 Hz ± 0.1 Hz		
Current Crest Ratio	3:1				3:1		
Harmonic Distortion	≤ 2 % THD (Linear Load) ≤ 4 % THD (Non-linear Load)				≤ 3 % THD (Linear Load) ≤ 6 % THD (Non-linear Load)		
Transfer Time	AC Mode to Batt. Mode				Zero		
	Inverter to Bypass				4 ms (Typical)		
Waveform (Batt. Mode)	Pure Sinewave				Zero		
EFFICIENCY							
AC Mode	87%		90%		89%		
Battery Mode	83%		87%		88%		
BATTERY							
Standard Model	Battery Type	12 V / 7Ah	12 V / 9Ah	12 V / 7Ah	12 V / 9Ah	12 V / 7Ah	12 V / 9Ah
	Numbers	3	3	6	6	20	20
	Typical Recharge Time	4 hours recover to 90% capacity				7 hours recover to 90% capacity	9 hours recover to 90% capacity
	Charging Current (max.)	1.0 A				1.0 A	
	Charging Voltage	41.0 VDC ± 1%		82.1 VDC ± 1%		273.0 VDC ± 1%	
Long-run Model	Battery Type	Depending on applications				Depending on applications	
	Numbers	3	3	6	6	18-20	
	Charging Current (max.)	8.0 A				4.0 A	
	Charging Voltage	41.0 VDC ± 1%		82.1 VDC ± 1%		273.0 VDC ± 1%	
INDICATORS							
LCD Display	UPS status, Load level, Battery level, Input/Output voltage, Discharge timer, and Fault conditions						
ALARM							
Battery Mode	Sounding every 4 seconds						
Low Battery	Sounding every second						
Overload	Sounding twice every second						
Fault	Continuously sounding						
PHYSICAL							
Standard Model	Dimension, DxWxH(mm)	397 x 145 x 220		421 x 190 x 318		592 x 250 x 576	
	Net Weight (kgs)	13	14	26	28	81	83
Long-run Model	Dimension, DxWxH(mm)	397 x 145 x 220		421 x 190 x 318		592 x 250 x 576	
	Net Weight (kgs)	7	7	13	13	25	27
ENVIRONMENT							
Humidity	20-90 % RH @ 0- 40°C (Non-condensing)						
Noise Level	Less than 50dB@1Meter				Less than 55dB@1Meter	Less than 58dB@1Meter	
MANAGEMENT							
Smart RS-232	Supports Windows: 2000/2003/XP/Vista/2008, Windows 7/8, Linux, Unix, and MAC						
USB							
Optional SNMP							Power management from SNMP manager and web browser

*Derate to 60% of capacity in Frequency converter mode and to 80% when the output voltage is adjusted to 100VAC, 200VAC or 208 VAC.
** L means long-run model

Tower Battery Pack (Optional built-in charger)

Capacity (VA)	1K/1.5K		2K/3K			
Battery Type	12 V 7 Ah	12 V 9Ah	12 V 7 Ah	12 V 9Ah	12 V 7 Ah	12 V 9Ah
Battery Number	6pcs	6 pcs	16 pcs	16 pcs	18 pcs	18 pcs
Dimension (DxWxH) mm	397 x 145 x 220		535 x 190 x 318		535 x 190 x 318	
Net Weight (kgs)	18	20	49.4	55.3	60.9	67.5
Capacity (VA)	6K/10K					
Battery Type	12 V 7 Ah	12 V 9Ah	12 V 7 Ah	12 V 9Ah	12 V 7 Ah	12 V 9Ah
Battery Number	40 pcs	40 pcs	60 pcs	60 pcs	80 pcs	80 pcs
Dimension (DxWxH) mm	592 x 250 x 576		830 x 250 x 576		815 x 250 x 826	
Net Weight (kgs)	109	125	166	190	210	242

* There are several battery options for Titan Pro 2K/3K/6K/10K. Please check the above table for the detailed dimensions.

Cel/WhatsApp : 955035523

Tel.Fijo : 01 224-3975 / 01 637-8101

Dirección : Calle Marchand N°558 San Borja, Lima

E-mail : mguin@centralionperu.com

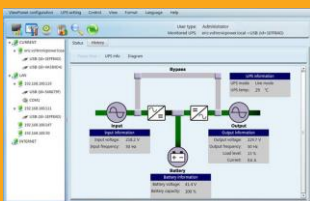
Web : www.centralionperu.com

Rack Battery Pack

Form Factor	2U				3U	
Capacity (VA)	1K	1K / 1.5K	2K	2K / 3K	6K/10K	
Battery Type	12 V / 9 Ah	12 V / 9 Ah	12 V / 9 Ah	12 V / 9 Ah	12 V / 7 Ah	12 V / 9 Ah
Battery Number	4 pcs	6 pcs	8 pcs	12 pcs	20 pcs	20 pcs
Dimension (DxWxH) mm	380 x 438 x 88		480 x 438 x 88	600 x 438 x 88	580 X 438 X 131	
Net Weight (kgs)	16.9	21.3	28.7	40.8	57	65

Software

ViewPower - UPS Management Software



- * Allows control and monitoring of multiple UPSs via LAN and INTERNET
- * User-friendly power analysis graphs
- * Real-time dynamic graphs of UPS data
- * Safety OS shutdown and protection from data loss during power failure
- * Warning notifications via audible alarm, broadcast, mobile messenger, and e-mail
- * Scheduled UPS on/off, battery test, programmable outlet control, and audible alarm control
- * Password security protection and remote access management
- * Supports multiple OS and local languages

Accessory

Remote Control Agent

SNMP Card



- * Allows control and monitoring of multiple UPSs through RJ-45 network connection
- * Real-time dynamic graphs of UPS data (voltage, frequency, load level, battery level)
- * Warning notifications via audible alarm, broadcast, mobile messenger, e-mail and SNMP traps
- * Historic data log stored in centralized PC database
- * Simple firmware upgrade with one click
- * Password security protection and remote access management
- * Supports optional environmental monitoring detector for temperature, humidity and smoke
- * 2-year product warranty

AS-400 Card



9-pin interface

RS-232 interface

- * Capable of selecting the status of the dry-contact signal by setting jumper to meet different application requirements.
- * Suitable applications: IBM Server, Personal PC & Workstation equipments, Auto-controlled industrial equipment & communication applications

Rackmount Slider

Simple installation for mounting Titan Pro Rack in your server rack enclosure.



PDU & Maintenance Bypass Switch



External Maintenance Bypass Switch



Automatic Transfer Switch (ATS)



Cel/WhatsApp : 955035523
Tel.Fijo : 01 224-3975 / 01 637-8101
Dirección : Calle Marchand N°558 San Borja, Lima
E-mail : mguin@centralionperu.com
Web : www.centralionperu.com