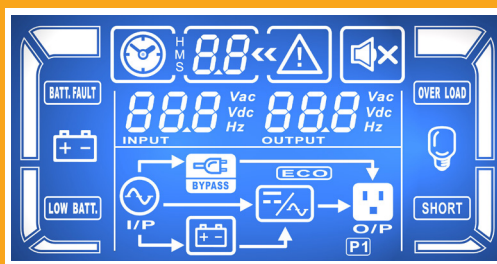


# Titan Pro



## LCD Display Panel



### • True double-conversion online UPS

A true double conversion UPS will provide clean, high level quality power to fully protect mission-critical devices such as sensitive networks, small computer centers, servers, telecom applications, as well as for industrial applications.

### • Output power factor 0.8

Compared to the online UPS in the current market, Titan Pro series provides better output power factor up to 0.8. It offers higher performance and efficiency for critical applications.

### • Wide input voltage range (110V - 300V)

Titan Pro can still provide stable power to connected devices under unstable power environments.

### • Programmable power management outlets

With programmable power management outlets, users can easily and independently control load segments. During power failure, this feature enables users to extend battery time to mission-critical devices by shutting down the non-critical devices.

Programmable Outlets (P1)  
- connect to non-critical devices



### • 50/60 Hz Frequency Converter Mode

Lock output frequency at 50Hz or 60Hz to suit power sensitive equipments.

### • ECO mode operation for energy saving

Offers efficiency as high as 97% to cut energy usage & cost. UPS power application via static bypass, timely returning to online double conversion when the need arises.

### • Emergency Power Off (EPO) Function

This feature can secure the personnel and equipment in case of fires or other emergencies.

### • SNMP+USB+RS-232 multiple communications for 1-3K models

This feature allows either USB or RS-232 communication port to work with SNMP interface simultaneously.

### • DSP technology applied for 6K and up models

A DSP controller provides an improved and cost-effective solution with high performance.

### • Smart battery charger design to optimize battery performance

- Titan Pro 1-3K series is equipped with **2-stage charger design** to guarantee battery discharge time. Besides, it will adjust charging voltage according to outside temperature. This feature will extend the useful service life of batteries.
- Titan Pro 6K and up models are equipped with **3-stage extendable charger** for optimized battery performance. This feature extends the useful service life of batteries and optimizes battery recharge time. Besides, the extendable charger design can be stacked in numbers for large-capacity battery charging.

### • Maintenance bypass available for 6K and up models

Internal bypass assures continuous power to critical devices during UPS maintenance.

### • Optional hot standby mode and N+X parallel redundancy available for 6K and up models

For genuinely redundant power protection, Titan Pro (6K and up models) can either be used in parallel operation with up to 3 units or hot standby mode. Save UPS will back up the load in the event of critical component failure. It increases power safety and availability.

### • Adjustable battery numbers for 6K and up models

Titan Pro (6K and up models) can still normal operate well with only 18 or 19 internal batteries.

### • Built-in isolation transformer (Option)

With built-in isolation transformer, the UPS will offer full isolation and complete common mode noise rejection for connected precious equipment. It become an ideal power source with 100% protection against unexpected AC power problems.



6K/10K(L) 6KL 2K(L)/3K(L) 1K(L)/1.5K(L)

# 1KVA/1.5KVA/2KVA/3KVA/6KVA/10KVA Online UPS Selection Guide

MODEL		Titan Pro 1K (L)		Titan Pro 1.5K (L)		Titan Pro 2K (L)		Titan Pro 3K (L)		Titan Pro 6K (L)		Titan Pro 10K (L)				
PHASE		Single phase with ground														
CAPACITY		1000 VA/800 W		1500 VA/1200 W		2000 VA/1600 W		3000 VA/2400 W		6000 VA/4800 W		10000 VA/8000 W				
INPUT																
Nominal Voltage		200/208/220/230/240 VAC or 100/110/115/120/127 VAC								208/220/230/240 VAC						
Voltage Range		55-150 VAC ± 5 % or 110-300 VAC ± 5 % at 50% load 80-150 VAC ± 5 % or 160-300 VAC ± 5 % at 100% load								110-300 VAC at 50% load 176-300 VAC at 100% load						
Frequency Range		40 Hz ~ 70 Hz								46 ~ 54 Hz or 56 ~ 64 Hz						
Power Factor		0.99 @ Nominal Voltage (100% Load)								0.99 @ 100% Load						
OUTPUT																
Output Voltage		200/208/220/230/240 VAC or 100/110/115/120/127 VAC								208/220/230/240 VAC						
AC Voltage Regulation (Batt. Mode)		± 1%								± 1%						
Frequency Range (Synchronized Range)		47~53 Hz or 57~63 Hz								46 ~ 54 Hz or 56 ~ 64 Hz						
Frequency Range (Batt. Mode)		50 Hz ± 0.25 Hz or 60Hz ± 0.3 Hz								50 Hz ± 0.1 Hz or 60 Hz ± 0.1 Hz						
Current Crest Ratio		3:1								3:1						
Harmonic Distortion		2 % THD (Linear Load) 4 % THD (Non-linear Load)								3 % THD (Linear Load) 6 % THD (Non-linear Load)						
Transfer Time	AC Mode to Batt. Mode		Zero								Zero					
	Inverter to Bypass		4 ms (Typical)													
Waveform (Batt. Mode)		Pure Sinewave														
EFFICIENCY																
AC Mode		87%				90%				89%						
Battery Mode		83%				87%				88%						
BATTERY																
Standard Model	Battery Type		12 V / 7 Ah		12 V / 9 Ah		12 V / 7 Ah		12 V / 9 Ah		12 V / 7 Ah		12 V / 9 Ah			
	Numbers		3		3		6		6		20		20			
	Typical Recharge Time		4 hours recover to 90% capacity										7 hours recover to 90% capacity		9 hours recover to 90% capacity	
	Charging Current (max.)		1.0 A										1.0 A			
	Charging Voltage		41.0 VDC ± 1%				82.1 VDC ±1%				273.0 VDC ±1%					
Long-run Model	Battery Type		Depending on applications										Depending on applications			
	Numbers		3		3		6		6		18-20					
	Charging Current (max.)		8.0 A										4.0 A			
	Charging Voltage		41.0 VDC ± 1%				82.1 VDC ±1%				273.0 VDC ±1%					
INDICATORS																
LCD Display		UPS status, Load level, Battery level, Input/Output voltage, Discharge timer, and Fault conditions														
ALARM																
Battery Mode		Sounding every 4 seconds														
Low Battery		Sounding every second														
Overload		Sounding twice every second														
Fault		Continuously sounding														
PHYSICAL																
Standard Model	Dimension, DxWxH(mm)		397 x 145 x 220				421 x 190 x 318				592 x 250 x 576					
	Net Weight (kgs)		13		14		26		28		81		83			
Long-run Model	Dimension, Dx W x H(mm)		397 x 145 x 220				421 x 190 x 318				592 x 250 x 576					
	Net Weight (kgs)		7		7		13		13		25		27			
ENVIRONMENT																
Humidity		20-90 % RH @ 0- 40°C (Non-condensing)														
Noise Level		Less than 50dB@1Meter										Less than 55dB@1Meter		Less than 58dB@1Meter		
MANAGEMENT																
Smart RS-232		Supports Windows <sup>2</sup> 2000/2003/XP/Vista/2008, Windows <sup>2</sup> 7/8, Linux, Unix, and MAC														
USB																
Optional SNMP																
Power management from SNMP manager and web browser																

\*Derate to 60% of capacity in Frequency converter mode and to 80% when the output voltage is adjusted to 100VAC,200VAC or 208 VAC.

\*\* L means long-run model

## Tower Battery Pack (Optional built-in charger)

Capacity (VA)	1K/1.5K		2K/3K			
Battery Type	12 V 7 Ah	12 V 9 Ah	12 V 7 Ah	12 V 9 Ah	12 V 7 Ah	12 V 9 Ah
Battery Number	6pcs	6 pcs	16 pcs	16 pcs	18 pcs	18 pcs
Dimension (DxWxH) mm	397 x 145 x 220		535 x 190 x 318		535 x 190 x 318	
Net Weight (kgs)	18	20	49.4	55.3	60.9	67.5
Capacity (VA)	6K/10K					
Battery Type	12 V 7 Ah	12 V 9 Ah	12 V 7 Ah	12 V 9 Ah	12 V 7 Ah	12 V 9 Ah
Battery Number	40 pcs	40 pcs	60 pcs	60 pcs	80 pcs	80 pcs
Dimension (DxWxH) mm	592 x 250 x 576		830 x 250 x 576		815 x 250 x 826	
Net Weight (kgs)	109	125	166	190	210	242

\* There are several battery options for Titan Pro 2K/3K/6K/10K. Please check the above table for the detailed dimensions.

# Rackmount/Rack Tower

(Option)



- True double-conversion
- Wide input voltage range (110-300 VAC)
- Input power factor correction 0.99
- Output power factor 0.8
- 50Hz/60Hz frequency converter mode
- Programmable power management outlets
- Emergency power off function (EPO)
- ECO mode operation for energy saving (ECO)
- SNMP+USB+RS-232 multiple communications
- Smart battery charger design for optimized battery performance
- Selectable output voltage via LCD panel
- Optional isolation transformer offers full isolation and complete common mode noise rejection
- Hot-swappable battery design (only available for 1-3K)

## Rackmount/Rack Tower Online UPS Selection Guide

MODEL		TitanPro RM-1K (L)		TitanPro RM-1.5K (L)		TitanPro RM-2K (L)		TitanPro RM-3K (L)		TitanPro 6KR (L)		TitanPro 10KR (L)	
PHASE		Single phase with ground											
CAPACITY		1000 VA / 800 W		1500 VA / 1200W		2000 VA / 1600 W		3000 VA / 2400 W		6000 VA / 4800 W		10000 VA / 8000 VA	
INPUT													
Nominal Voltage		100/110/115/120/127 VAC or 200/208/220/230/240VAC								208/220/230/240 VAC			
Voltage Range		55-150 VAC ± 5 % or 110-300 VAC ± 5 % at 50% load								110-300 VAC at 50% load			
Frequency Range		80-150 VAC ± 5 % or 160-300 VAC ± 5 % at 100% load								176-300 VAC at 100% load			
		45Hz ~ 55 Hz or 56Hz ~ 65 Hz								46~54 Hz or 56~64 Hz			
Power Factor		0.99 @ Nominal Voltage (100% Load)								0.99 @ 100% load			
OUTPUT													
Output Voltage		100/110/115/120/127 VAC or 200/208/220/230/240VAC								208/220/230/240 VAC			
AC Voltage Regulation (Batt. Mode)		± 1%								± 1%			
Frequency Range (Synchronized Range)		40 Hz ~ 70 Hz								46~54 Hz or 56~64 Hz			
Frequency Range (Batt. Mode)		50 Hz ± 0.2 Hz or 60Hz ± 0.2 Hz								50 Hz ± 0.1 Hz or 60 Hz ± 0.1 Hz			
Current Crest Ratio		3:1								3:1			
Harmonic Distortion (Line Mode)		3 % THD (Linear Load), 6 % THD (Non-Linear load)								3 % THD (Linear Load) 6 % THD (Non-linear Load)			
Transfer Time	AC Mode to Batt. Mode	Zero											
	Inverter to Bypass	4 ms (Typical)								Zero			
Waveform (Batt. Mode)		Pure Sinewave											
EFFICIENCY													
AC Mode		86%		87%		87%		88%				89%	
Battery Mode		84%		85%		85%		86%				88%	
BATTERY													
Standard Model	Battery Type	12V/9Ah	12V/7Ah	12V/9Ah	12V/9Ah	12V/7Ah	12V/9Ah	12V/9Ah	12V/7Ah	12V/9Ah	12V/7Ah	12V/9Ah	12V/9Ah
	Numbers	2	3*	3	4	6*	6	6	6	6	20	20	20
	Typical Recharge Time	4 hours recover to 90% capacity								3 hours recover to 90% capacity		4 hours recover to 90% capacity	
	Charging Current (max.)	1.0 A											
	Charging Voltage	27.4 VDC ±1%	41.1 VDC ±1%	41.1 VDC ±1%	54.8 VDC ±1%	82.1 VDC ±1%	82.1 VDC ±1%	82.1 VDC ±1%	82.1 VDC ±1%	82.1 VDC ±1%	273 VDC ±1%	273 VDC ±1%	273 VDC ±1%
Long-run Model	Battery Type	Depending on the capacity of external batteries								Depending on applications			
	Numbers									18-20			
	Charging Current (max.)	1A / 2A / 4A / 8A											
	Charging Voltage	27.4 VDC ±1%	41.1 VDC ±1%	41.1 VDC ±1%	54.8 VDC ±1%	82.1 VDC ±1%	82.1 VDC ±1%	82.1 VDC ±1%	82.1 VDC ±1%	82.1 VDC ±1%	273.0 VDC ±1%	273.0 VDC ±1%	273.0 VDC ±1%
	Charging Voltage	27.4 VDC ±1%	41.1 VDC ±1%	41.1 VDC ±1%	54.8 VDC ±1%	82.1 VDC ±1%	82.1 VDC ±1%	82.1 VDC ±1%	82.1 VDC ±1%	82.1 VDC ±1%	273.0 VDC ±1%	273.0 VDC ±1%	273.0 VDC ±1%
INDICATORS													
LCD Panel		UPS status, Load level, Battery level, Input/Output voltage, Discharge timer, and Fault conditions											
ALARM													
Battery Mode		Sounding every 4 seconds											
Low Battery		Sounding every second											
Overload		Sounding twice every second											
Fault		Continuously sounding											
PHYSICAL													
Standard Model	Dimension, D x W x H (mm)	380 x 438 x 88 [2U]	480 x 438 x 88 [2U]	480 x 438 x 88 [2U]	480 x 438 x 88 [2U]	600 x 438 x 88 [2U]	600 x 438 x 88 [2U]	600 x 438 x 88 [2U]	600 x 438 x 88 [2U]	580 x 438 x133 [3U] Battery Pack : 580 x 438 x 133 [3U]	580 x 438 x 133 [3U]	668 x 438 x 133 [3U] Battery Pack : 580 x438 x 133 [3U]	668 x 438 x 133 [3U] Battery Pack : 580 x438 x 133 [3U]
	Net Weight (kgs)	13.2	18.4	18.5	20.6	25.7	29	29	29	29	UPS Unit : 17 Battery Pack : 17	20	UPS Unit : 20 Battery Pack : 23
Long-run Model	Dimension, D x W x H (mm)	380 x 438 x 88 [2U]	480 x 438 x 88 [2U]	480 x 438 x 88 [2U]	480 x 438 x 88 [2U]	600 x 438 x 88 [2U]	600 x 438 x 88 [2U]	600 x 438 x 88 [2U]	600 x 438 x 88 [2U]	580 x 438 x 133 [3U]	580 x 438 x 133 [3U]	668 x 438 x 133 [3U]	668 x 438 x 133 [3U]
	Net Weight (kgs)	9.1	11.3	10.7	11.3	14.6	14.8	14.8	14.8	17	17	20	20
ENVIRONMENT													
Humidity		20-90 % RH @ 0- 40°C (Non-condensing)											
Noise Level		Less than 50dB @ 1 Meter								Less than 55dB @ 1 Meter		Less than 58dBA @ 1 Meter	
MANAGEMENT													
Smart RS-232/USB		Supports Windows® 2000/2003/XP/Vista/2008, Windows® 7/8, Linux, Unix, and MAC											
Optional SNMP		Power management from SNMP manager and web browser											

\*In LV system, only 12V/7Ah x 3 for 1K model and 12V/7Ah x 6 for 2K model are available.

NOTE 1: Derate to 60% of capacity in CVCF mode and to 90% when the output voltage is adjusted to 100VAC/200VAC/208VAC.

NOTE 2: If the UPS is installed or used in a place where the altitude is above than 1000m, the output power must be derated one percent per 100m.

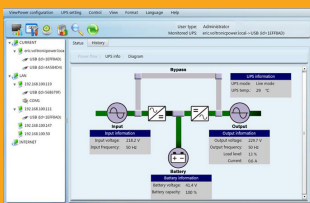
\*\* L means long-run model

## Rack Battery Pack

Form Factor	2U				3U	
Capacity (VA)	1K	1K / 1.5K	2K	2K / 3K	6K/10K	
Battery Type	12 V / 9 Ah	12 V / 9 Ah	12 V / 9 Ah	12 V / 9 Ah	12 V / 7 Ah	12 V / 9 Ah
Battery Number	4 pcs	6 pcs	8 pcs	12 pcs	20 pcs	20 pcs
Dimension (DxWxH) mm	380 x 438 x 88		480 x 438 x 88	600 x 438 x 88	580 X 438 X 131	
Net Weight (kgs)	16.9	21.3	28.7	40.8	57	65

## Software

### ViewPower - UPS Management Software



- \* Allows control and monitoring of multiple UPSs via LAN and INTERNET
- \* User-friendly power analysis graphs
- \* Real-time dynamic graphs of UPS data
- \* Safely OS shutdown and protection from data loss during power failure
- \* Warning notifications via audible alarm, broadcast, mobile messenger, and e-mail
- \* Scheduled UPS on/off, battery test, programmable outlet control, and audible alarm control
- \* Password security protection and remote access management
- \* Supports multiple OS and local languages

## Accessory

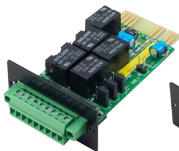
### Remote Control Agent

#### SNMP Card

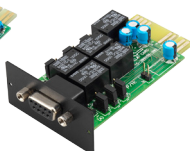


- \* Allows control and monitoring of multiple UPSs through RJ-45 network connection
- \* Real-time dynamic graphs of UPS data (voltage, frequency, load level, battery level)
- \* Warning notifications via audible alarm, broadcast, mobile messenger, e-mail and SNMP traps
- \* Historic data log stored in centralized PC database
- \* Simple firmware upgrade with one click
- \* Password security protection and remote access management
- \* Supports optional environmental monitoring detector for temperature, humidity and smoke
- \* 2-year product warranty

#### AS-400 Card



9-pin interface

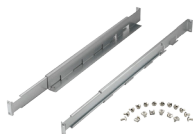


RS-232 interface

- \* Capable of selecting the status of the dry-contact signal by setting jumper to meet different application requirements.
- \* Suitable applications: IBM Server, Personal PC & Workstations equipments, Auto-controlled industrial equipment & communication applications

#### Rackmount Slider

Simple installation for mounting Titan Pro Rack in your server rack enclosure.



#### PDU & Maintenance Bypass Switch



#### External Maintenance Bypass Switch



#### Automatic Transfer Switch (ATS)



**CENTRALION**  
AVR & UPS, Protección Eléctrica Confiable

Tel : 224-3975 637-8101  
Calle Marchand N°558 San Borja, Lima  
E-mail : jose@centralionperu.com  
Web : centralionperu.com